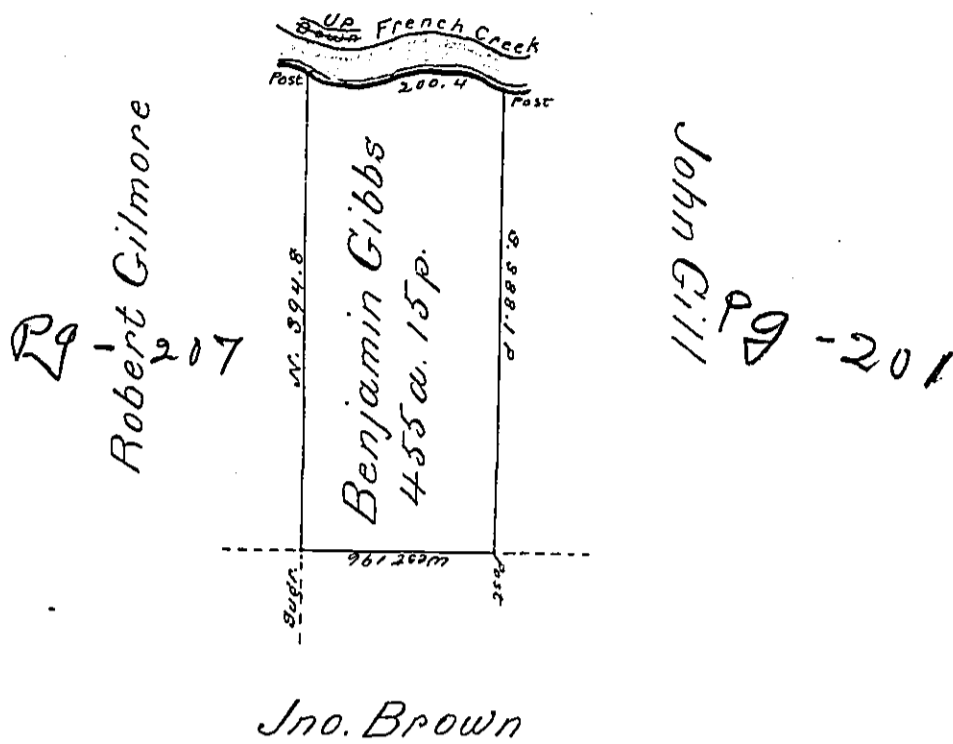


River Courses

S. 75° E. 39.9  
 N. 83° E. 16.  
 N. 75° E. 31  
 N. 84° E. 66  
 S. 82° E. 19.5  
 S. 72½° E. 28  
200.4



Situate on the East side of French Creek in  
 Ally County Containing 455 acres and 15 perches and  
 allowance of Six per cent for Roads &c. Surveyed the 15th  
 day of November 1794 In pursuance of a Warrant  
 Dated the 13th Day of Apl. 1792

Wm. Power Dy Sr.  
 To Danl. Brodhead Esqr. }  
 Surveyor General }

IN TESTIMONY that the above is a copy of the original remaining on file in  
 the Department of Internal Affairs of Pennsylvania, made  
 conformably to an Act of Assembly approved the 16th day of  
 February, 1833, I have hereunto set my Hand and caused  
 the Seal of said Department to be affixed at Harrisburg,  
 this third day of October 1899

*James W. Latta*  
 Secretary of Internal Affairs,